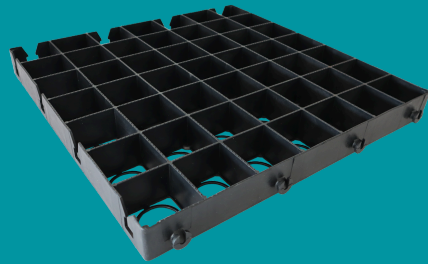


GSECODECK/40

Ecodeck 40 500mm x 500mm x 40mm deep gravel and grass paver, ideally suited to pathways, shed bases, private driveways



DESCRIPTION

Ecodeck 40 500mm x 500mm x 40mm deep gravel and grass paver, ideally suited to pathways, shed bases, private driveways

SPECIFICATION

General information

Stock code

GSECODECK/40

Geocellular paving

Colour

Black

Length

500 mm

Width

500 mm

Height

40 mm

Weight per m2

4kg

NOTES

Gravel pavers should be overfilled by approximately 10–20 mm (1–2 cm) above the top of the grid cells.

Why Overfill?

- To hide the grid: A slight overfill conceals the plastic structure of the paver, making the surface visually continuous with the surrounding area.
- To allow for settling and compaction: Gravel will settle over time due to foot or vehicle traffic. The overfill compensates for this, maintaining coverage and performance.
- To maintain a smooth surface: Without enough overfill, the tops of the grid can become exposed, especially in high-traffic areas, which may lead to discomfort, wear, or damage.

Extra information

Applications	Courtyards, decorative landscaping, forecourts, greenhouse bases, parking areas, pathways, private driveways, shed bases, patios
Filling	Gravel, Stone, Grass, Grass Seed, Soil, 3mm-30mm
Temperature Stability	-50°C to 90°C
Fitting	4 integrated V force push fit locking connections per side
Environment	Complies with S.U.D.S & Flood & Water Management Act 2010
Vehicle testing	Tested to withstand vehicles up to 30 tonnes
Compression test	500 tonne
Axle load	30 tonnes
Extra	Built-in anti-migration cell bottom lattice and anti-gravel movement ribs, cell-wall topped anti-slip nodules. Used on slop inclines of in excess of 1 in 4.
Guarantee	10-year guarantee

PACKAGING

Quantity per pallet	m ² per pallet
260	65m ²

- 1. Geoworks (trading as Wrekin Products Ltd.) continually seeks to improve its products and, therefore, reserves the right to alter product specifications without prior notice.
- 2. It is the responsibility of all users to satisfy themselves the above data is current.
- 3. Installation details are available in the [knowledge base](#).
- 4. All Geoworks products are supplied subject to our [Terms and Conditions of Sale](#).

